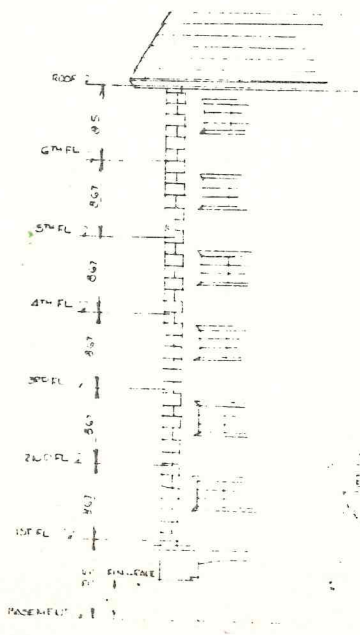
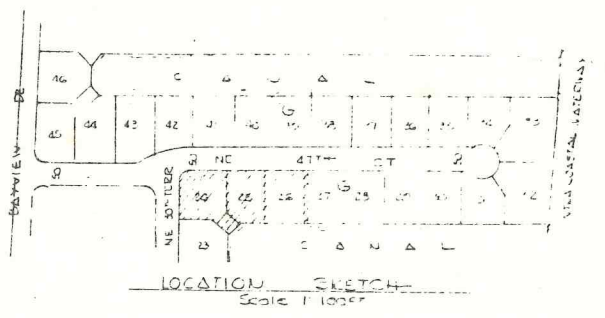
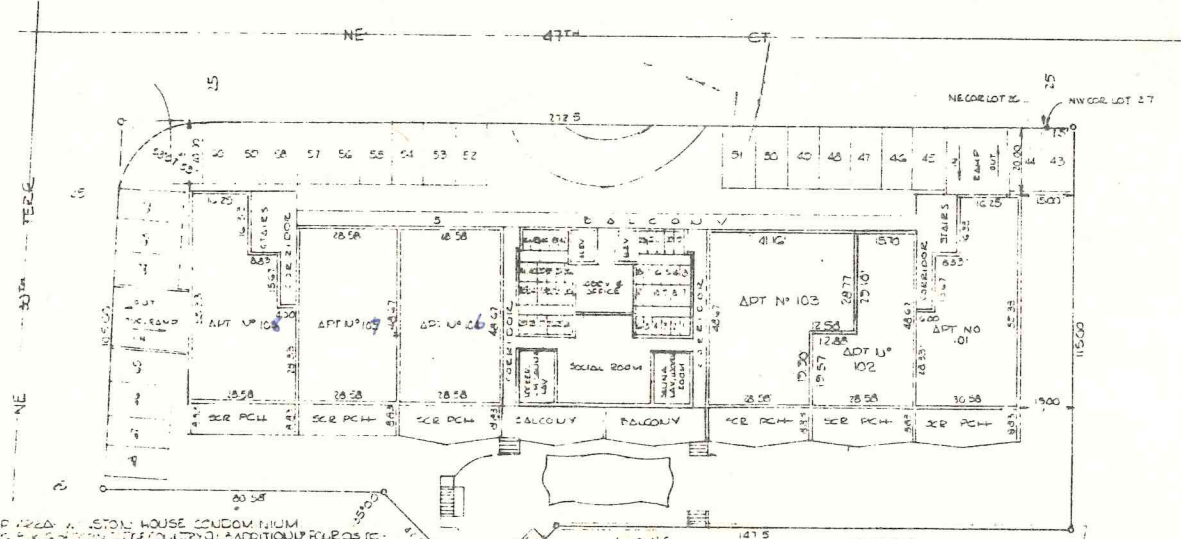


CERTIFICATION

KNOW ALL MEN BY THESE PRESENTS that the undersigned who is a Surveyor authorized to practice in Florida hereby certifies that the attached plan and a more detailed description of Land Improvements and that there is no other Declaration of Condominium of which they are made a part are in sufficient detail to identify the "WINSTON HOUSE CONDOMINIUM" as described hereon and to identify the common elements and each unit and their relative locations, to ascertain dimensions and the existing material, including the existing utility location, as correct representation of the improvements described and their location as determined hereon, and of each unit and their dimensions and size of the improvements and of each unit as represented on the Architectural Plans prepared by Joseph Phillips Jr. Architect, Tallahassee, Florida, Commission #1232.

IN WITNESS WHEREOF, I have hereunto set my hand and seal, this 17th day of April, 1968.

Donald W. McEntire
DONALD W. MCENTIRE
REGISTERED SURVEYOR
STATE OF FLORIDA



LEGAL DESCRIPTION OF THE INTEREST OF THE WINSTON HOUSE CONDOMINIUM
Common elements and units are located on lots 15, 16, 17, 18, 19, 20, 21, 22, 23, 24, 25, 26, 27, 28, 29, 30, 31, 32, 33, 34, 35, 36, 37, 38, 39, 40, 41, 42, 43, 44, 45, 46, 47, 48, 49, 50, 51, 52, 53, 54, 55, 56, 57, 58, 59, 60, 61, 62, 63, 64, 65, 66, 67, 68, 69, 70, 71, 72, 73, 74, 75, 76, 77, 78, 79, 80, 81, 82, 83, 84, 85, 86, 87, 88, 89, 90, 91, 92, 93, 94, 95, 96, 97, 98, 99, 100, 101, 102, 103, 104, 105, 106, 107, 108, 109, 110, 111, 112, 113, 114, 115, 116, 117, 118, 119, 120, 121, 122, 123, 124, 125, 126, 127, 128, 129, 130, 131, 132, 133, 134, 135, 136, 137, 138, 139, 140, 141, 142, 143, 144, 145, 146, 147, 148, 149, 150, 151, 152, 153, 154, 155, 156, 157, 158, 159, 160, 161, 162, 163, 164, 165, 166, 167, 168, 169, 170, 171, 172, 173, 174, 175, 176, 177, 178, 179, 180, 181, 182, 183, 184, 185, 186, 187, 188, 189, 190, 191, 192, 193, 194, 195, 196, 197, 198, 199, 200, 201, 202, 203, 204, 205, 206, 207, 208, 209, 210, 211, 212, 213, 214, 215, 216, 217, 218, 219, 220, 221, 222, 223, 224, 225, 226, 227, 228, 229, 230, 231, 232, 233, 234, 235, 236, 237, 238, 239, 240, 241, 242, 243, 244, 245, 246, 247, 248, 249, 250, 251, 252, 253, 254, 255, 256, 257, 258, 259, 260, 261, 262, 263, 264, 265, 266, 267, 268, 269, 270, 271, 272, 273, 274, 275, 276, 277, 278, 279, 280, 281, 282, 283, 284, 285, 286, 287, 288, 289, 290, 291, 292, 293, 294, 295, 296, 297, 298, 299, 300, 301, 302, 303, 304, 305, 306, 307, 308, 309, 310, 311, 312, 313, 314, 315, 316, 317, 318, 319, 320, 321, 322, 323, 324, 325, 326, 327, 328, 329, 330, 331, 332, 333, 334, 335, 336, 337, 338, 339, 340, 341, 342, 343, 344, 345, 346, 347, 348, 349, 350, 351, 352, 353, 354, 355, 356, 357, 358, 359, 360, 361, 362, 363, 364, 365, 366, 367, 368, 369, 370, 371, 372, 373, 374, 375, 376, 377, 378, 379, 380, 381, 382, 383, 384, 385, 386, 387, 388, 389, 390, 391, 392, 393, 394, 395, 396, 397, 398, 399, 400, 401, 402, 403, 404, 405, 406, 407, 408, 409, 410, 411, 412, 413, 414, 415, 416, 417, 418, 419, 420, 421, 422, 423, 424, 425, 426, 427, 428, 429, 430, 431, 432, 433, 434, 435, 436, 437, 438, 439, 440, 441, 442, 443, 444, 445, 446, 447, 448, 449, 450, 451, 452, 453, 454, 455, 456, 457, 458, 459, 460, 461, 462, 463, 464, 465, 466, 467, 468, 469, 470, 471, 472, 473, 474, 475, 476, 477, 478, 479, 480, 481, 482, 483, 484, 485, 486, 487, 488, 489, 490, 491, 492, 493, 494, 495, 496, 497, 498, 499, 500, 501, 502, 503, 504, 505, 506, 507, 508, 509, 510, 511, 512, 513, 514, 515, 516, 517, 518, 519, 520, 521, 522, 523, 524, 525, 526, 527, 528, 529, 530, 531, 532, 533, 534, 535, 536, 537, 538, 539, 540, 541, 542, 543, 544, 545, 546, 547, 548, 549, 550, 551, 552, 553, 554, 555, 556, 557, 558, 559, 560, 561, 562, 563, 564, 565, 566, 567, 568, 569, 570, 571, 572, 573, 574, 575, 576, 577, 578, 579, 580, 581, 582, 583, 584, 585, 586, 587, 588, 589, 590, 591, 592, 593, 594, 595, 596, 597, 598, 599, 600, 601, 602, 603, 604, 605, 606, 607, 608, 609, 610, 611, 612, 613, 614, 615, 616, 617, 618, 619, 620, 621, 622, 623, 624, 625, 626, 627, 628, 629, 630, 631, 632, 633, 634, 635, 636, 637, 638, 639, 640, 641, 642, 643, 644, 645, 646, 647, 648, 649, 650, 651, 652, 653, 654, 655, 656, 657, 658, 659, 660, 661, 662, 663, 664, 665, 666, 667, 668, 669, 670, 671, 672, 673, 674, 675, 676, 677, 678, 679, 680, 681, 682, 683, 684, 685, 686, 687, 688, 689, 690, 691, 692, 693, 694, 695, 696, 697, 698, 699, 700, 701, 702, 703, 704, 705, 706, 707, 708, 709, 710, 711, 712, 713, 714, 715, 716, 717, 718, 719, 720, 721, 722, 723, 724, 725, 726, 727, 728, 729, 730, 731, 732, 733, 734, 735, 736, 737, 738, 739, 740, 741, 742, 743, 744, 745, 746, 747, 748, 749, 750, 751, 752, 753, 754, 755, 756, 757, 758, 759, 760, 761, 762, 763, 764, 765, 766, 767, 768, 769, 770, 771, 772, 773, 774, 775, 776, 777, 778, 779, 780, 781, 782, 783, 784, 785, 786, 787, 788, 789, 790, 791, 792, 793, 794, 795, 796, 797, 798, 799, 800, 801, 802, 803, 804, 805, 806, 807, 808, 809, 810, 811, 812, 813, 814, 815, 816, 817, 818, 819, 820, 821, 822, 823, 824, 825, 826, 827, 828, 829, 830, 831, 832, 833, 834, 835, 836, 837, 838, 839, 840, 841, 842, 843, 844, 845, 846, 847, 848, 849, 850, 851, 852, 853, 854, 855, 856, 857, 858, 859, 860, 861, 862, 863, 864, 865, 866, 867, 868, 869, 870, 871, 872, 873, 874, 875, 876, 877, 878, 879, 880, 881, 882, 883, 884, 885, 886, 887, 888, 889, 890, 891, 892, 893, 894, 895, 896, 897, 898, 899, 900, 901, 902, 903, 904, 905, 906, 907, 908, 909, 910, 911, 912, 913, 914, 915, 916, 917, 918, 919, 920, 921, 922, 923, 924, 925, 926, 927, 928, 929, 930, 931, 932, 933, 934, 935, 936, 937, 938, 939, 940, 941, 942, 943, 944, 945, 946, 947, 948, 949, 950, 951, 952, 953, 954, 955, 956, 957, 958, 959, 960, 961, 962, 963, 964, 965, 966, 967, 968, 969, 970, 971, 972, 973, 974, 975, 976, 977, 978, 979, 980, 981, 982, 983, 984, 985, 986, 987, 988, 989, 990, 991, 992, 993, 994, 995, 996, 997, 998, 999, 1000.

DESCRIPTION OF PRIVATE UNITS
PRIVATE UNITS means and comprises the separate and numbered units including fixtures, appliances and improvements, lying beneath the undecorated and/or unadorned surfaces of the perimeter walls, and above the undecorated and/or unfinished inner surfaces of the ceilings of each unit and further extending therefrom all spaces and improvements, and beneath the undecorated and/or unfinished inner surfaces of all interior walls, and/or partitions and further including all pipes, wires, conduits and other facilities running through the interior walls or partitions for the furnishing of utility services to PRIVATE UNITS AND COMMON PROPERTY.

DESCRIPTION OF COMMON PROPERTY
COMMON PROPERTY means and comprises the real property improvements and fixtures of the condominium other than the PRIVATE UNITS and enclosed encasements, including PRIVATE UNITS and encasements, including utility lines and other facilities for the furnishing of utility services to PRIVATE UNITS AND COMMON PROPERTY and encasements of support, and other facilities for the furnishing of utility services to PRIVATE UNITS AND COMMON PROPERTY and encasements of support, and other facilities for the furnishing of utility services to PRIVATE UNITS AND COMMON PROPERTY.

WINSTON HOUSE CONDOMINIUM

EXHIBIT "A"
PAGE 3 AMENDED

Donald W. McEntire
DONALD W. MCENTIRE
REGISTERED SURVEYOR
STATE OF FLORIDA

AMENDED
KNOW ALL MEN BY THESE PRESENTS that the undersigned who is a Surveyor authorized to practice in Florida hereby certifies that the attached plan and a more detailed description of Land Improvements and that there is no other Declaration of Condominium of which they are made a part are in sufficient detail to identify the "WINSTON HOUSE CONDOMINIUM" as described hereon and to identify the common elements and each unit and their relative locations, to ascertain dimensions and the existing material, including the existing utility location, as correct representation of the improvements described and their location as determined hereon, and of each unit and their dimensions and size of the improvements and of each unit as represented on the Architectural Plans prepared by Joseph Phillips Jr. Architect, Tallahassee, Florida, Commission #1232.

OFFICE REC. 4420 PAGE 156